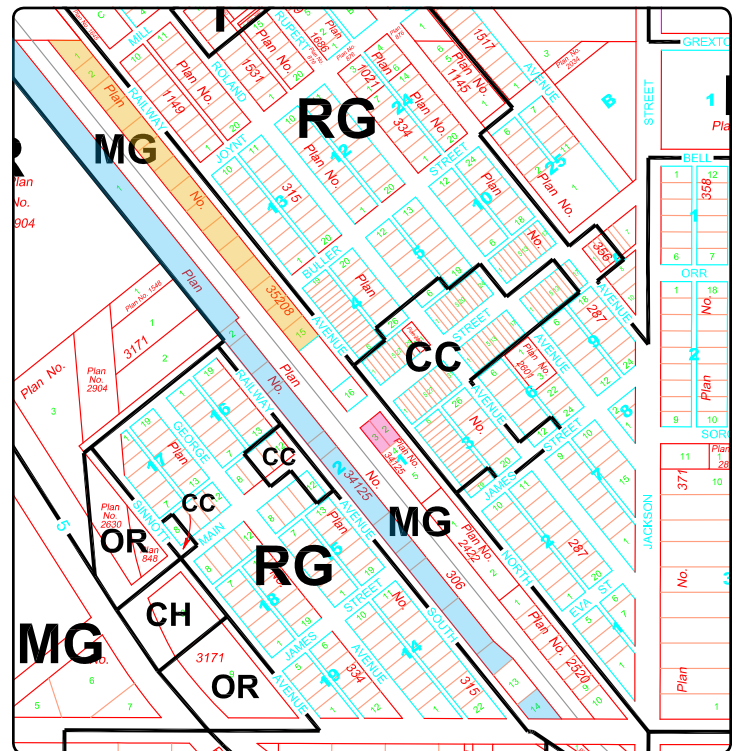


# COMMERICAL & INDUSTRIAL LAND

## Railway Lots



<b>Land Owner</b>	As detailed below
<b>Land Description</b>	SE 24-25-24W <span style="color: yellow;">■</span> Lot 1-15, Plan 35208 – Town of Grandview <span style="color: magenta;">■</span> Lot 2, 3, 4, Block 1, Plan 34125 – HLK Enterprises Ltd. <span style="color: blue;">■</span> Lots 1-12 and 14, Block 2, Plan 34125 – Canadian National Railway
<b>Land Cost</b>	Negotiable
<b>Site Features</b>	Rail spur, central location, on truck route
<b>Road Access</b>	PTH 5, PR366, Government Road Allowance Road, Main Street, Railway Ave North and Railway Avenue South
<b>Current Zoning</b>	Industrial General Zone – Mountainview Planning District
<b>Service Connection</b>	Town water and sewer, 3-Phase power and natural gas available
<b>Amenities Nearby</b>	Town water and sewer, 3-Phase power and natural gas available Junction between Duck Mountain Provincial Park (9 miles North) and Riding Mountain National Park (10 miles South), grassed municipal landing strip (3 miles East) or regional airport (30 miles East), VIA Rail passenger train stop and Hydro substation
<b>Area Services</b>	Hospital, K-12 school, 2 grocery stores, 2 banking institutions, 2 gas stations, pharmacy, shopping, skating/hockey arena, curling rink, bowling alley (9 miles East), 18 hole golf course (9 miles East), parks, outdoor swimming pool, playgrounds and churches.
<b>Rights</b>	Unknown



414 Main Street  
 P.O. Box 759  
 Grandview, Manitoba R0L 0Y0  
 Canada

Phone: (204) 546-2915  
 Fax: (204) 546-2909  
 Email: [parc@mts.net](mailto:parc@mts.net)  
[www.parklandmanitoba.ca](http://www.parklandmanitoba.ca)